






Slim wall mount | fixed **TH-3060-UF**
 Designed for Displays from 32" to 60" (81 - 153cm)

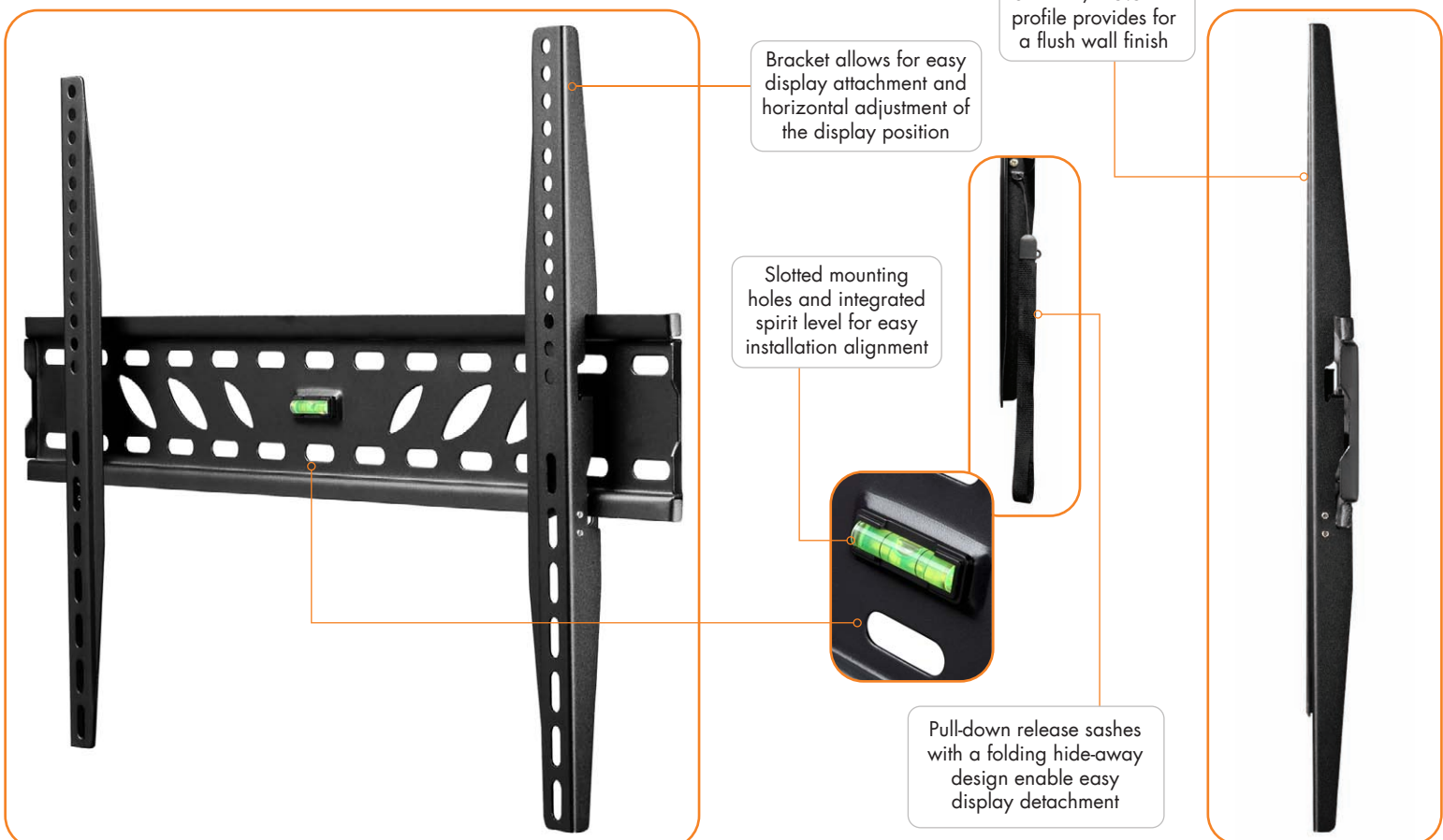
-  Universal mounting support up to 400x600mm
-  Suits medium weight displays
-  Display quick attachment System

This mounting solution is designed to suit the latest range of mid weight flat screens. It features a quality steel construction with a slim profile and a sleek matt black finish. It can be installed on walls in a variety of environments and is easy to set up. The display bracket allows for height adjustment during installation and horizontal adjustment both during and post installation. An attachment latching system allows the display to be easily cabled and then simply lifted and clicked into place. Release sashes on the latching system feature a fold-up design so they can be safely hidden behind the screen.



Product key features:

- Quality steel construction with a durable powder coat finish
- Slim profile suits modern LED/LCD displays and contemporary living environments
- When installed the Screen is offset just 25.5mm (1") from the wall
- Designed for displays of up to 50Kg / 110lbs with mounting patterns from 100x200mm to 400x600mm
- Designed for easy installation with in-built spirit level and slotted mounting holes for alignment
- Designed for flexible operation with provision for post installation adjustment of the horizontal display position and snap-in / quick release display attachment
- Suitable for attachment to timber stud and masonry walls*
- Supplied with mounting hardware and installation guide



* Direct attachment to plaster board/ gyp rock/etc is possible however additional dry wall anchors will be required (see your hardware supplier).



Atdec Global www.atdec.com.au
 Atdec North America www.atdec.com

Product information, single unit

Load capacity	Material	Style
50kg (110lbs) Max	Steel	Matt Black

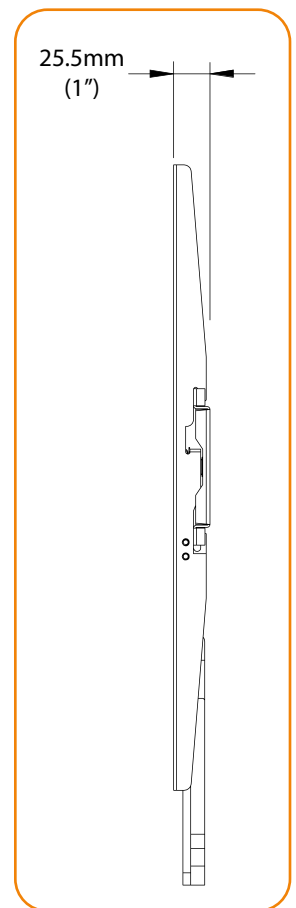
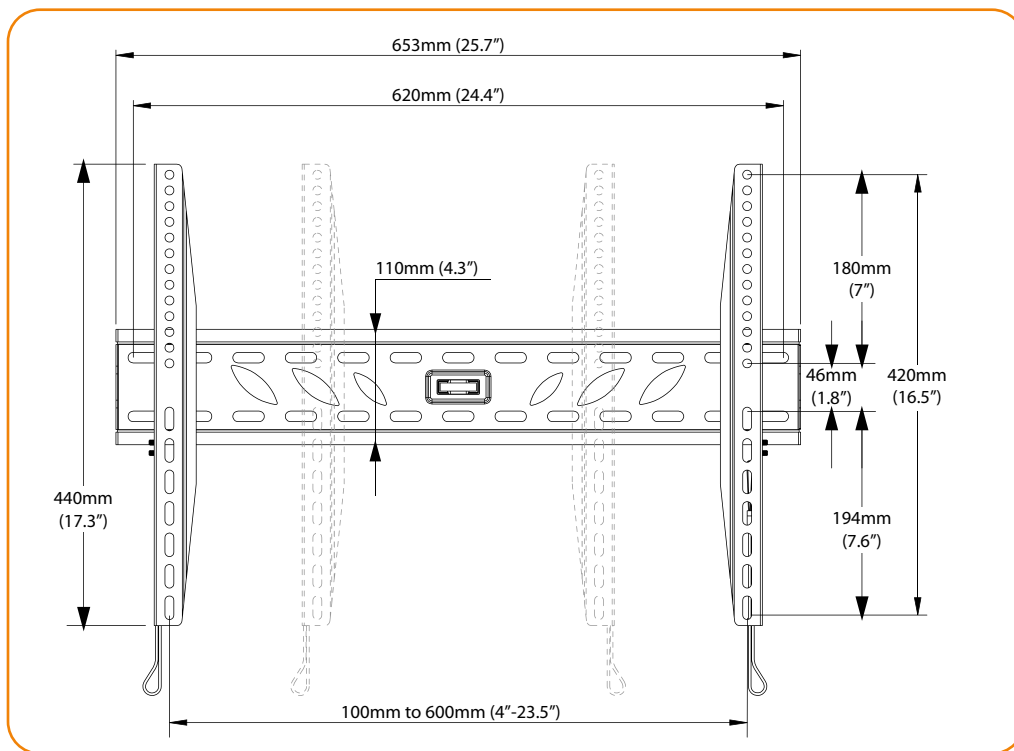
Package information, single unit

Size (L x W x H)	Ship weight	UPC code	Contents
673mmx124mmx48mm (26.5"x 4.9"x 1.9")	1.8Kg (4lbs)	881493006898	wall plate, display brackets (x2), wall mounting screws, wall plugs, display mounting screws and spacer adaptors

Package information, master pack

Size (L x W x H)	Ship weight	UPC	Units per master pack
686mmx257mmx257mm (27"x10.1"x10.1")	19.1Kg (42lbs)	881493006911	10

Technical drawings



Related Products:

TH-3060-UT	Slim mounting with tilt adjustment
TH-3060-LPF	Ultra-slim fixed mounting
TH-3070-UF	Fixed mounting for large/ heavy screens

Atdec mounts are designed, developed and tested in Australia. We manufacture an extensive range of display and projector mountings for a variety of user types and situations. While all efforts have been made to ensure the information in this brochure was correct as of the date of printing, we reserve the right to change specifications without notice. Please refer to the web site for our full range along with the latest details on specifications, compatibility and dealer location. atdec and telehook are registered trademarks with all rights reserved.
Copyright Feb 2011 V1.0



Atdec Global www.atdec.com.au
Atdec North America www.atdec.com